

Insulated Roller Door Specification

Our Roller garage door is an ideal solution for people who want to gain some extra space. Deciding on our garage door system can save you a lot of space inside your garage. To be fitted it needs only 300mm x 300mm of head-room space.

It opens vertically so you can park your car close to the door and it still opens without having to reverse.

Ideal for short driveways. Our premium roller door provides great strength and security; perfect for large openings.

It is a great insulation barrier, Ideal for integral garages. Save on heating and help the environment.

Standard Options



Curtain is finished in **white as standard** with the optional extra of laminated colours and woodgrain finishes.



Two **remote** controls are supplied as standard.



Impressive **20mm thick curtain** acts as a sound barrier.



Our Roller Doors are **made of aluminium**. Unlike steel this will not rust and looks much more attractive.



Powered by high quality **tube motor** with manual override and a 5 year warranty.



It can be fitted **internally or externally face fixed** or **in between the aperture**. *Full Box required for external fitting.



It has **built in autolocks**. When the door is closed a spring clamp device holds the door down tight.



It has a safety brake to comply with stringent European laws (when required).



Space saving. Gain extra storage space inside your garage and in many cases extra drive through space.



It has high density foam filling inside a wall of aluminium creating greater strength.



It is **thermally insulated**. In other words, thermal insulation can keep an enclosed area such as a garage warm. Ideal for integral garages, or garages with bedrooms above. Reducing CO²



Quick Limit button. To set the limits easier. Position it, press the button and it's done. Also much greater reliability than screw limits.

Optional Extras - Now build your door to your requirements



The **Safety Grid** comprises two slim line tracks which are simply fitted to the back of the door guides.



There are some fantastic finishes which are impossible to create with a normal paint finish. This is also a tougher finish which carries a **10** year warranty.



Manually operated. Simply lift the door up and down by hand, ideal for garages with no power.



The **Wind Lock Guide** offers added security against extreme weather conditions and attempted burglaries. This also allows for wider than 4920mm openings.



To be used in the event of power failure a lockable **through wall drive**, for garages with no other entrance.



The **Key Pad** is for access without the need to carry hand transmitters.



A single beam **photocell** in a fixed position. When broken the door stops.



Laminated or powder coated **matching guides**.



Add the **Battery Backup** and never worry about power failure again, no pulling on awkward cables to release the door or winding a crank handle. Just carry on using it as normal and wait for power to return.



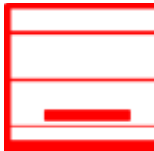
Safety Edge. A device which fastens to the bottom of weather strip. When contact with an obstruction is made the door will auto reverse. Available wired or wireless.



The **Courtesy light** gives you a few minutes light when the door is operated.



Pivo-Glide. These are special sliding end brackets, enabling the curtain to be fed straight into the tracks as the shutter unrolls, thereby reducing wear and scuffing of the curtain edges.



Door Monitor System. A device which fastens on the door and senses when obstruction is made. Wireless and easy to use.



Full Box prevents accidental finger entrapment and finishes the roller shutter off nicely. This comes finished in white and can be powder coated any other colour as an optional extra.



Multichannel Handset. This will enable you to operate up to four doors from one handset.

**WITH
OVER 100 LAMINATED FINISHES**

We CAN MATCH ANY COLOUR SCHEME!

The same finish is applied to many doors, windows and conservatories; so adding our laminated optional extra really will enhance your property. This also has many more advantages against standard paint finished roller doors.

Superior Thermal Insulation
The external foil coating creates a thermal break and with solar shield technology keeps the profiles much cooler, even with dark colours. Paint finish doors can be problematic when expansion occurs through heat. Our laminated colours greatly reduce such problems.

Colour Fast
Our laminated finishes are backed by a 10 year warranty. The multi-layer finish absorbs UV radiation by more than 95%.

Harder Wearing
The transparent outer layer protects the colour and is designed to withstand the variations of the European climate.

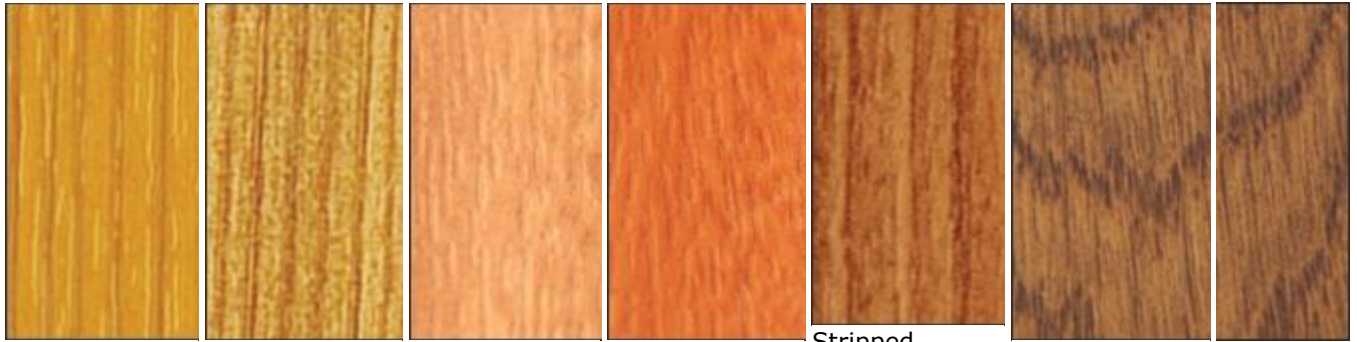
Dirt Repellent
The laminate finish is also amazingly easy to maintain, just occasionally clean using soapy water with a non-abrasive cloth or sponge.

Anti Graffiti Finish
With our new anti-graffiti film, graffiti can be easily removed. Such high performance. With higher UV resistance, this is ideal for countries with a hotter climate.

CHOICES OF LAMINATE FINISH

All our laminated colours are covered with 10 year warranty

Laminated - Classic Woodgrain



Oregon

Mountain Pine

Shogun AC

Shogun AF

Stripped
Douglass Fir

Sherwood G



Golden Oak

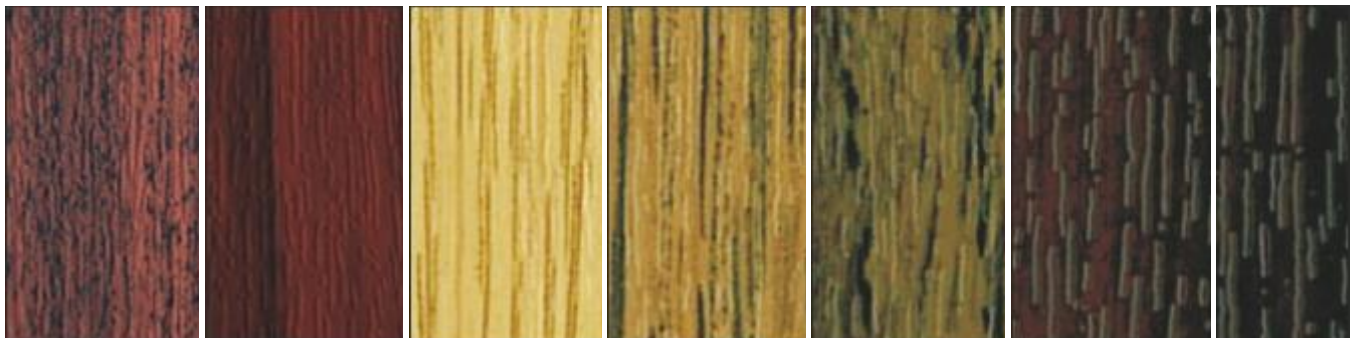
Macore

Sherwood W

Walnut

Shogun AD

Ambassador B



Regency A

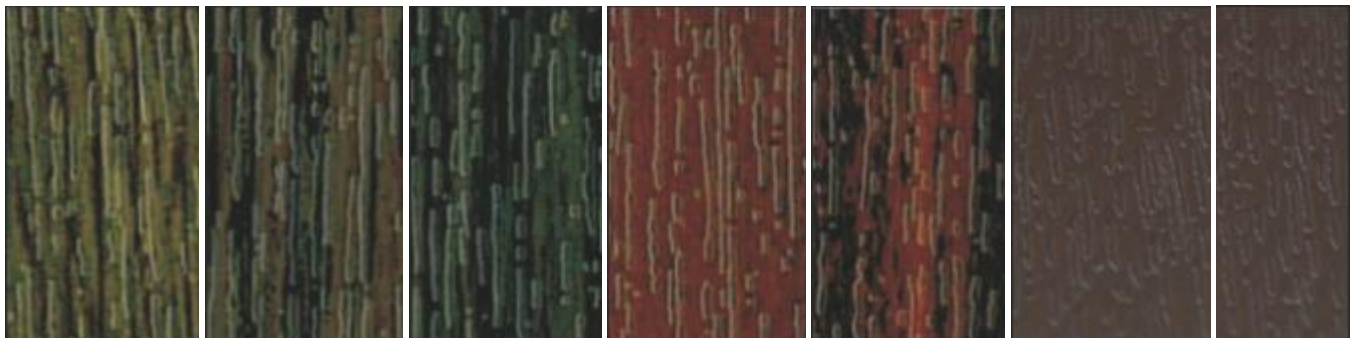
Piedmont A

Natural Oak

Light Oak

Oak

Black Cherry



Dark Oak

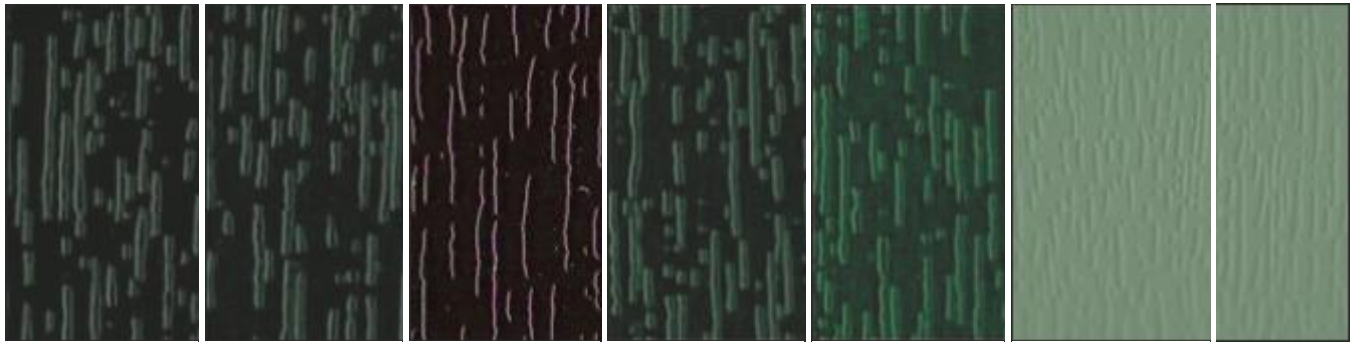
Rustical Oak

Swamp Oak

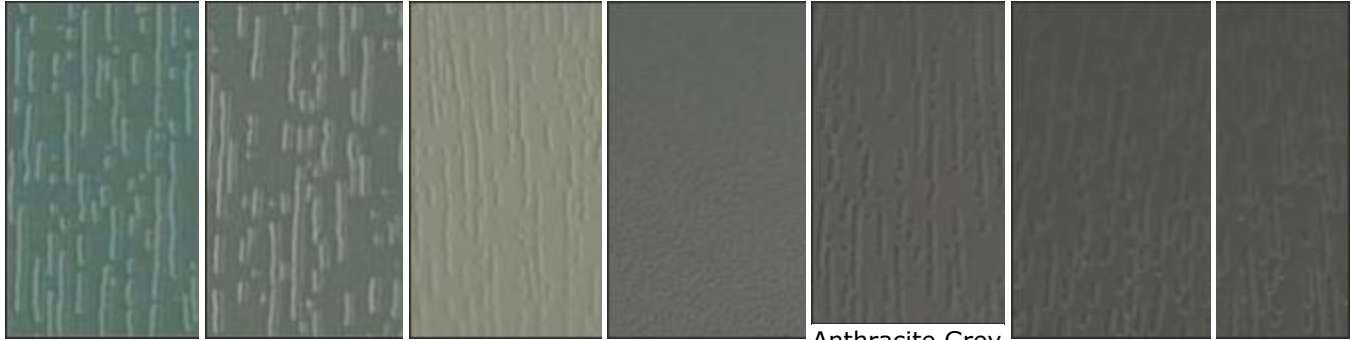
Sapeli

Mahogany

Cocoa Brown



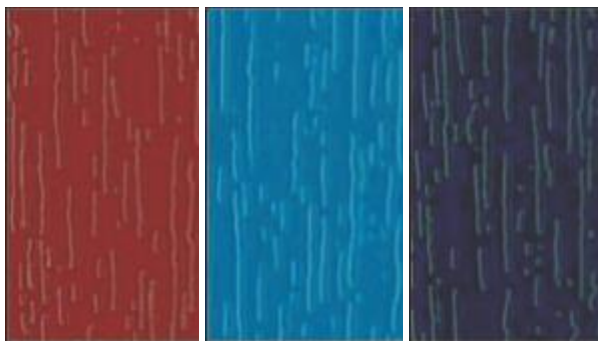
Chocolate Brown Black Ash Beck Brown Dark Green Moss Green Chartwell Green



Basalt Grey Quartz Grey Agate Grey Anthracite Grey Smooth Anthracite Grey Woodgrain Gale Grey



Slate Grey Hazy Grey Signal Grey Light Grey Grey Dark Red



Wine Red Brilliant Blue Steel Blue

Laminated - Premier Silk



Irish Oak Winchester XA Antique Oak Winchester XC Siena PL Teresina XC

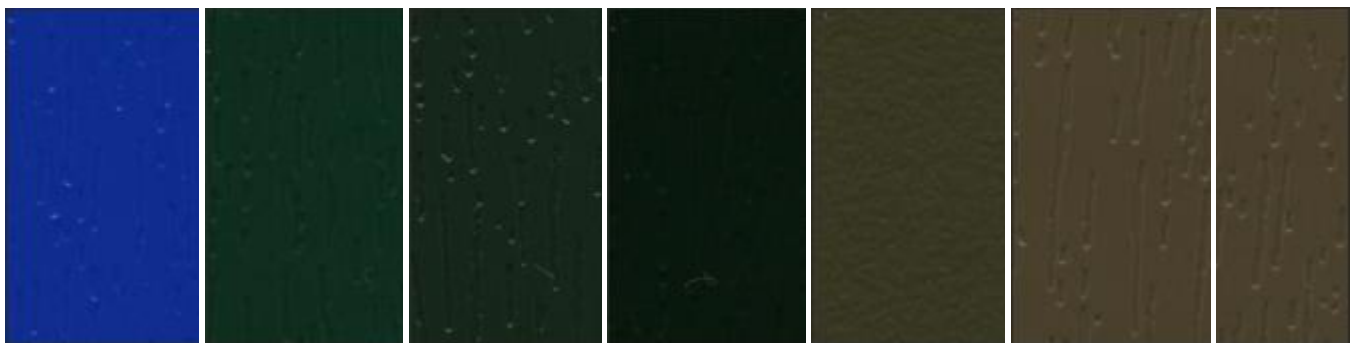


Siena PR Siena PN Wisconsin XD Gale Grey Finesse Slate Grey Finesse Fir Green Finesse



Wine Red Finesse Hazy Grey Finesse Silver Platinum Soft Cherry Anteak

Laminated - Anti Graffiti



Dark Blue Moss Green AG Green Dark Green AG Flemish Gold Choco Brown



Certificates.



CE marked to BS EN 13241-1:2003 and security tested to the equivalent of prEN1630. The principle European standard relevant to domestic garage doors identifies all the critical health and safety consideration within the design and manufacture of the product. This gives resellers, users and consumers the necessary reassurance that they are purchasing a safe and reliable product.



Our products are manufactured under an ISO:9001 Quality management system, assuring you that your door is monitored from start to finish.

We are very proud of our product. Our every door is checked and photographed proving final inspection is carried out before it leaves our factory.



Our products are manufactured under an ISO:14001 environment management system assuring you that we monitor and reduce our carbon footprint wherever possible.

Warranty

All products are independently tested to the highest standards and are certified to the high safety requirements and performance characteristics of European Standard 13241-1. You can, therefore, be confident that your purchase of our product is a safe investment.

Our Guarantee offers the following warranty: The purchaser is granted a warranty covering the safe and reliable operation of the garage door for a period of 5 years from the date of purchase. This warranty is conditional on the regular inspection and maintenance of the product, in accordance with the installation manual supplied with the door. During the guarantee period the manufacturer undertakes to repair, without charge, any product which has suffered a proven failure of its safe and reliable operation, provided that the door has been inspected regularly (at least once a year] and maintained correctly, including replacement of wear items when required. The garage door systems are guaranteed against any form of manufacturing defects for a period of 5 years from the date of purchase. The finish of white powder coated doors is guaranteed for a period of 5 years. In the case of foil laminate finished doors, the exterior finish is guaranteed to provide an effective weatherproof membrane which will resist perforation of the Door

from the weather-side due to corrosion for 10 years. Furthermore, colour change or fade to the exterior surface will be limited and uniform for the full 10 year period.

Garage Door Automation:
Electric operators are guaranteed against any form of manufacturing defect for a period of 5 years for mechanical elements, motors and transformers. The motor control unit is guaranteed for 2 years. Remote control accessories and parts are guaranteed for a period of 2 years. No warranty claims will be accepted for wear and tear parts and consumable parts (e.g. light bulbs and batteries).

A1 Garage Door Specialists Ltd
Incl A1 Security Shutters
Tel No 01983884600
Web – www.a1specialists.co.uk